



- 额定电流最高达 50A
Rated currents up to 50A
- 卓越的差模和共模衰减性能
Excellent attenuation filtering performance
- 可选医疗型 (M 型)
Optional medical versions (M type)
- 不同的出线连接方式
Different output connections
- 安规认证: Approval

特点 Features

- 高性能双极单相滤波器 嵌入式/螺母
High performance compact single phase filter with faston/nut
- 良好的共模和差模干扰抑制特性.
Good performance of common mode and differential mode interference suppression
- 通用、小巧、方便安装
General purpose, compact, easy for installation and use

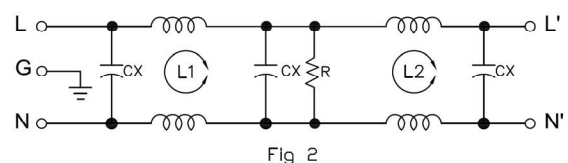
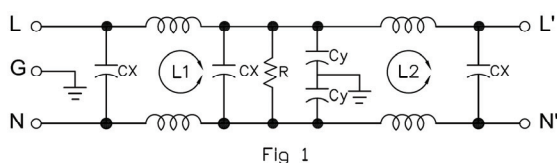
应用 Application

- 用于大多数数字设备 (尤其是开关电源) 用来抑制连续或间隙性脉冲干扰
For digital systems (particularly for switching power supplies) to suppress the continuity or intermittent pulse interference
- 带变频器的白色家电、控制系统上的变频器用
White goods with frequency inverters, inverter based control system
- 医疗设备及医疗特别应用 (低泄漏电流)
Medical equipment and medical typical applications (Low current leakage)

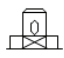


技术参数 Technical Data

额定电压 Rated Voltage	125/250VAC
工作频率 Operation Frequency	50/60Hz
额定电流 Rated Current	1-50A
耐压测试 Hi-pot Test	1450VDC 2sec (线对线 Line to Line) 2250VDC 2sec (线对地 Line to Ground)
气候类别 Climate Category	25/85/21 (-25°C to +85°C)
设计参考标准 Design corresponding to	UL 1283, CSA 22.2 No. 8 1986, IEC/EN 60939

电路原理图 Electrical Schematic

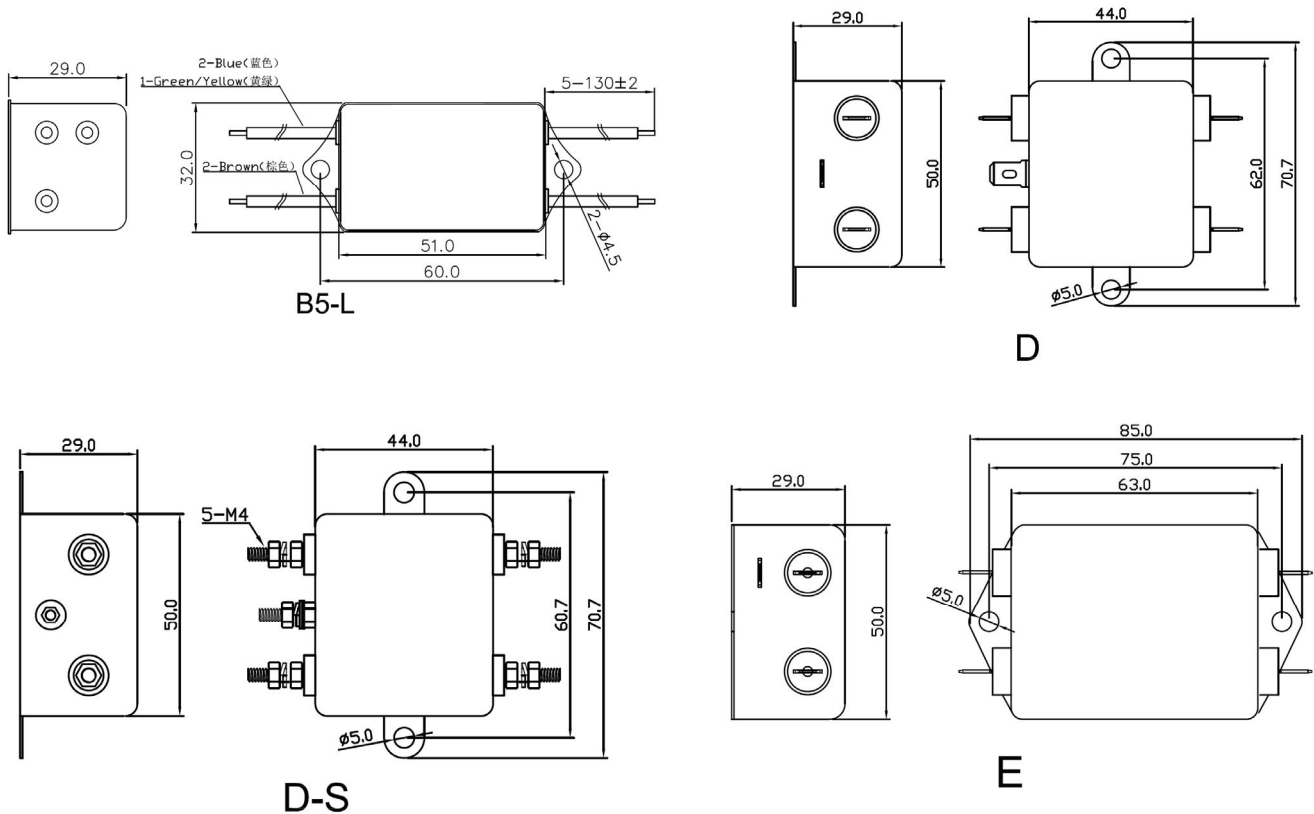


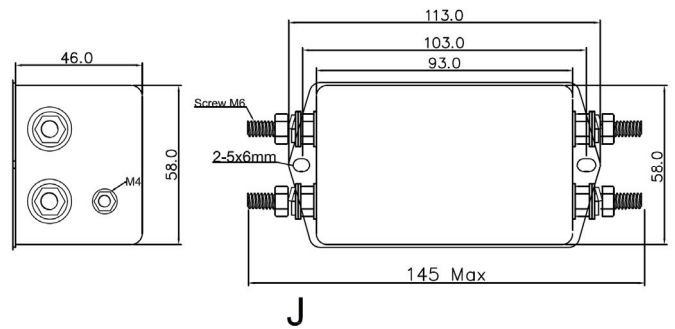
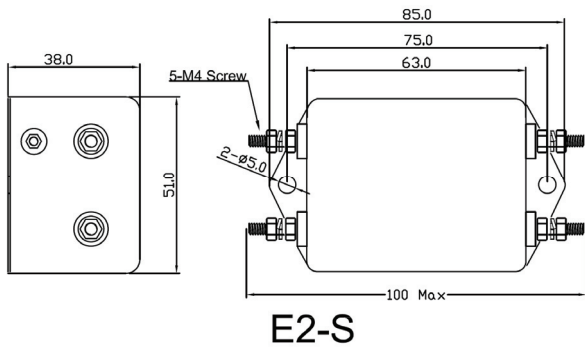
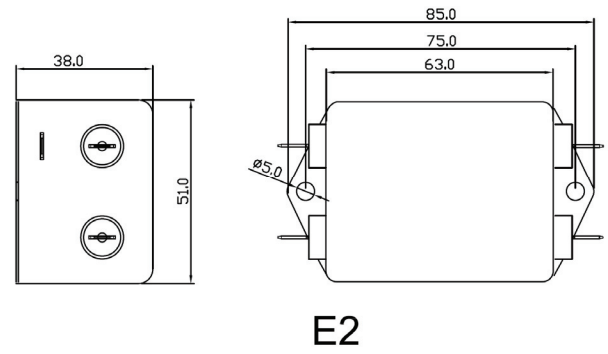
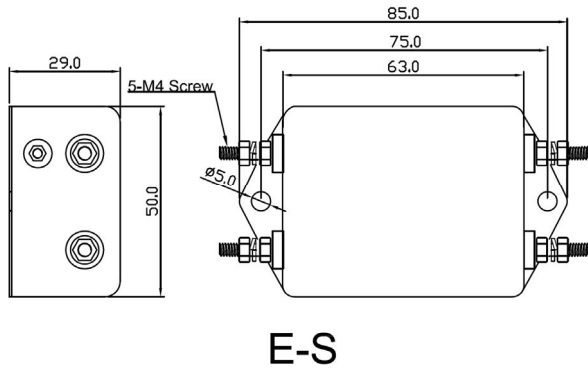
选型表 Type Selection Table

型号 Model	额定电流(A) Rated Current	泄漏电流(≤mA) Leakage Current	电路图 Circuit Diagram	外形尺寸 Dim. Fig.	出线端子方式 Output Connection		
							
DF202-1A-01	1	0.5	Fig 1	D	B5-L	D-S	
DF202-3A-01	3	0.5	Fig 1	D	B5-L	D-S	
DF202-6A-01	6	0.5	Fig 1	E	B5-L	E-S	
DF202-10A-01	10	0.5	Fig 1	E/E2	B5-L	E-S/E2-S	
DF202-15A-01	15	0.5	Fig 1	E/E2	-	E-S/E2-S	
DF202-20A-01	20	0.5	Fig 1	E/E2	-	E-S/E2-S	
DF202-30A-01	30	0.5	Fig 1	-	-	J	
DF202-40A-01	40	0.5	Fig 1	-	-	J	
DF202-50A-01	50	0.5	Fig 1	-	-	J	
DF202-1A-01M	1	0.01	Fig 2	D	B5-L	D-S	
DF202-3A-01M	3	0.01	Fig 2	D	B5-L	D-S	
DF202-6A-01M	6	0.01	Fig 2	E	B5-L	E-S	
DF202-10A-01M	10	0.01	Fig 2	E/E2	B5-L	E-S/E2-S	
DF202-15A-01M	15	0.01	Fig 2	E/E2	-	E-S/E2-S	
DF202-20A-01M	20	0.01	Fig 1	E/E2	-	E-S/E2-S	
DF202-30A-01M	30	0.01	Fig 1	-	-	J	
DF202-40A-01M	40	0.01	Fig 1	-	-	J	
DF202-50A-01M	50	0.01	Fig 1	-	-	J	

Remark: Model name follow by: Blank represents Faston connection, L represents Wire connection, S represents Screw connection
 标准型号为快速插片端子, 型号后加 L 为引线接线方式, 型号后加 S 为螺丝接线方式 “-” 表示无此出线方式

外形尺寸 Outline Dimensions(mm)

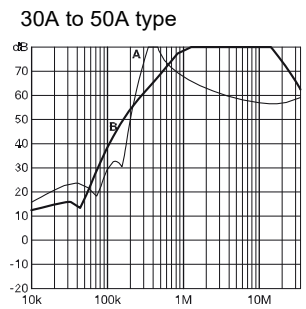
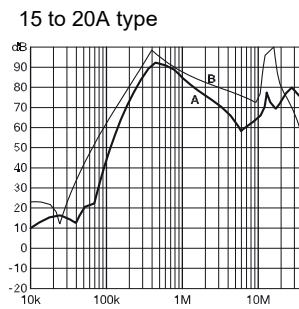
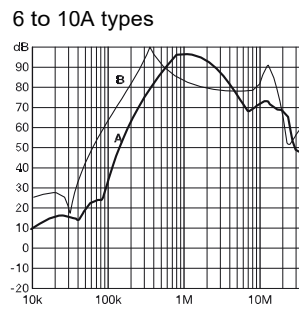
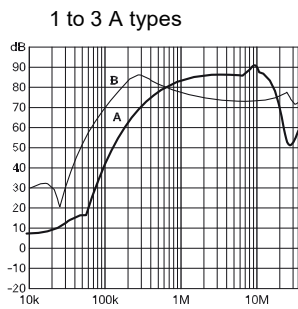




插入损耗 Insertion Loss in dB

(50Ω/50Ω 环境下插入损耗 Insertion Loss in dB measured in a 50Ω/50Ω system, as IEC/CISPR No. 17)

A=Differential mode (差模) B=Common Mode(共模)



备注：以上规格为公司标准产品，可根据客户产品定制设计产品性能和尺寸外观。

Remark: Customized products are available according to special performance or dimensions requirements

更多产品请登陆官方网站：<http://www.dephir.com>

For more products please go to official website: <http://www.dephir.com>